

# New Lexington Schools

## Health and Safety Coalition

*Continuity of Service Plan – ARP-ESSER  
NLSD Guidelines for 2021-22 School Year  
Amended 12-1-21*



This document represents a collaborative effort from New Lexington Schools and the Perry County Health Department. The key details to consider and the resulting recommendations have been developed based on the current information from ODH and the PCHD. While some guidelines are non-negotiable per ODH directives, it will be up to individual school districts as to how they implement these best practice protocols. Please note that this is a fluid document and guidelines may change as prescriptive health orders are updated.

# Our Purpose

At New Lexington Schools we are committed to maintaining a safe and productive learning environment for everyone. In order to maintain a safe setting for all of our students and staff, and to comply with the orders, regulations and recommendations issued by the Ohio Department of Health for the safe return to school, we commit to maintaining the expectations set forth in this document for students and staff.





## Recommendations

### Protective Measures

- **Physical Distancing**

- o Physical distancing of 3 feet is recommended in the following areas and settings:
  - Classrooms
  - Common areas: halls, entry ways, lunch rooms, restrooms, entry and exit points to buildings
  - Office areas
  - Playgrounds
  - Gymnasiums and auditoriums
  - School transportation

- **District Face Masks Status (Color System)**

- o **GREEN:** Students, staff, visitors and contractors do not have to wear a mask while indoors. Masks are required on school transportation vehicles.
- o **YELLOW:** Students, staff, visitors and contractors are encouraged to wear a mask while indoors. Masks are required on school transportation vehicles.
- o **RED:** Students, staff, visitors and contractors must wear a mask while indoors. Masks are required on school transportation vehicles.

- **Exemptions to the use of masks include when:**

- o Health conditions
- o Assist with communication for hearing impaired students
- o Student I.E.P. recommendations
- o Religious affiliation
- o Working alone in assigned work area

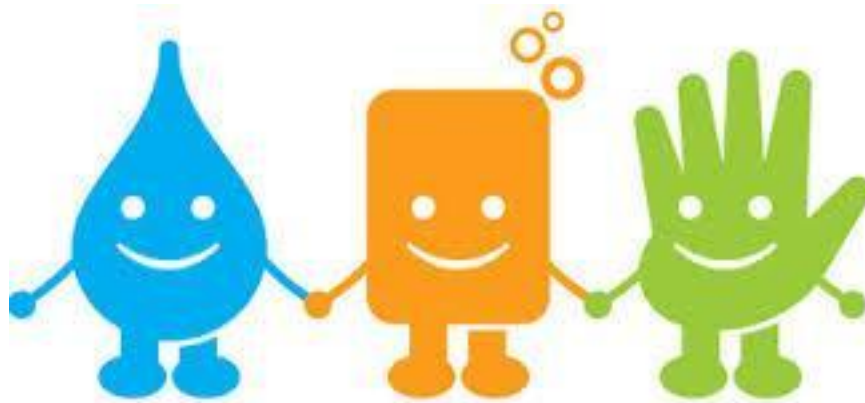


- **Hand Hygiene**

- Sanitizer stations are readily available to students and staff throughout the facilities
- Assure accessibility to sinks, soap, and paper towels
- Hands should be washed or sanitized:
  - Upon entry
  - Before eating
  - Before boarding the bus and at the end of the day
  - After restroom use
  - Any time hands are soiled
- Soap and water are to be used in between hand sanitizer use

- **Personal Protective Equipment (PPE)**

- District shall have available Personal Protective Equipment (PPE)



## Sanitization

- Students and staff share responsibility for building cleanliness
- Provide staff with access to cleaning products
- **Classrooms:**
  - Building life-long learning for health practices in our students is important.
  - Staff will regularly:
    - Spray their own desks, door handles, and learning supplies
- **Pay special attention to common areas for disinfecting:**
  - Door handles, hand rails, high touch points
  - Sinks
  - Water fountains: replaced with bottle filling stations
  - Printers, copiers, shared technology and equipment
  - Phones
  - Staff only areas (break rooms, mail room, etc.)
  - Shared spaces
  - Recommend cleaning throughout the day and evening hours
- **Student supplies:** limit sharing when possible; disinfect between use when shared



## **Transportation**

- Home self-health assessments completed by parents/guardians
  - Home self-assessment is a daily health check prior to going to school which should include taking a student's temperature and assessing for COVID symptoms.
    - Symptoms include: fever or chills, cough, shortness of breath or difficulty breathing, fatigue, muscle or body aches, headache, loss of taste or smell, sore throat, congestion or runny nose, nausea or vomiting, diarrhea
  - Anyone with symptoms or a fever above 100°F should stay home.
- Masks will be worn on school transportation vehicles
- Disinfect all vehicles
- Coordinate procedures with other transportation stakeholders such as parochial, public school, and daycare transportation staff

---

## Building Considerations

- **Bathrooms**
  - Post directions on correct handwashing procedures
  - Maintain ample supplies and deep cleaning schedule
  - Limit/stagger student access
- **Fire and Tornado Drills**
  - Perform drills according to ability to adapt for social distancing
- **First Aid and Emergency Medical Procedures**
  - Emergency procedures without PPE are at the risk and discretion of the employee and are not required

---

## Daily Transitions

### Daily Transitions: Drop Off and Pick Up

- Drop off and pick up procedures for students who are not riding buses may change and will be building specific
  - These will be provided by the building of attendance due to logistical differences
- Parents/Guardians picking up their students will buzz the building, and the student will be taken outside in order to limit all outside visitors
  - Please call the office ahead of time so your child is prepared for pick up



## Health Assessments

- **Implement a symptom check and monitoring form**
  - o Home self-health assessments completed by parents/guardians and employees
    - Home self-assessment is a daily health check prior to going to school which should include taking a student's temperature and assessing for COVID-19 symptoms.
      - Symptoms include: fever or chills, cough, shortness of breath or difficulty breathing, fatigue, muscle or body aches, headache, loss of taste or smell, sore throat, congestion or runny nose, nausea or vomiting, diarrhea
    - Anyone with symptoms or a fever above 100°F should stay home.





---

## **COVID-19 Tracking and Reporting**

- Recommend parents report diagnosis to school and health department
- PCG performs contact tracing
  - Student directory information may be shared in these instances
- Collaborate with local health department
- Return to school or work procedures
- Follow CDC, ODH, and Perry County Health Department guidance

---

## **High Risk Students and Staff**

- Vulnerable student populations include foster care, homeless, mental/emotional conditions, Adverse Childhood Experiences (ACES), special needs, medically complex, medically fragile, chronic disease, etc.
- Staff with chronic illness and/or other underlying contributing health factors, pregnancy, etc.
- Procedures that aerosolize the virus cannot be performed safely in schools:
  - Nebulizers
  - Suctioning: oral and tracheal
  - High flow oxygen
- Specialized Personal Protective Equipment (PPE) is recommended for procedures that require less than 3 foot distance

- o School nurse assessment of ill and injured children
- o CPI holds
- o Hand over hand instruction
- o Diapering and toileting
- o Medical procedures: catheterizations, tube feed, ostomy care, diabetes care
- o PT/OT/Speech/Adaptive PE

## Additional Resources

- **Hopewell Health Center**
  - o <https://www.hopewellhealth.org/>
- **New Lexington Schools Facebook**
  - o <https://www.facebook.com/pages/category/School/New-Lexington-School-District-4-19939374745657/>
- **New Lexington Schools Webpage**
  - o <https://www.nlpanthers.org>
- **Ohio Department of Education**
  - o <http://education.ohio.gov/>
- **Ohio Department of Health**
  - o <https://coronavirus.ohio.gov/>
- **Perry County Health Department Facebook**
  - o <https://www.facebook.com/Perry-County-Health-Department-139224129481428/>
- **Perry County Health Department Webpage**
  - o <http://perrycountyhealth.info/>
  - o <https://coronavirus.ohio.gov/wps/portal/gov/covid-19/responsible-restart-ohio/sector-specific-operating-requirements/sector-specific-operating-requirements>



## **ARP ESSER – Continuity of Service Plan**

ARP ESSER funds have been provided to all public school districts in the country. The district will be using the funds to cover the increased costs as they relate to COVID-19, as well as to prevent and respond to the challenges the pandemic brings.

- In the 2022-2023 school year, the roofs of the Middle School and High School will be replaced to help improve indoor air quality and ventilation. Improving air quality and ventilation will allow students to return to and continue in-person instruction in the context of the COVID pandemic. This will allow for the district to prevent, prepare for, and respond to coronavirus.
- In the 2022-2023 school year, the siding at the Middle School will be updated and repaired. Updates to the siding will help with insulation and better air flow within the Middle School.
- In school years 2022-2024, new construction on a Panther Wellness Center will be completed. This new space will free up classroom space, making social distancing easier, at the Middle School and High School. The following activities and functions will be housed at this new facility:
  - Credit recovery
  - Administration of vaccines
  - Health and wellness services
  - Social and emotional learning
  - An additional nurse's station
  - Additional space for preschool classroom(s)
  - Administrative offices including spaces for student enrollment and student testing functions.
- During the 2022-2023 school year, an outdoor classroom space for science and agriculture classes will be created through a Wetland Learning Lab and an Elementary Learning Lab. This increases the amount of available outdoor space for classroom use for students and teachers to use, which will permit social distancing between and among students and staff.
  - The Elementary Learning Lab will be a place where students will have expanded opportunities for STEM, farm to table, agriculture, and emergent culinary classes. This space will also be available to the community during non-school hours as a swing space for functions such as concessions for biddy league events and activities.
- During the 2022-2023 school year, the playgrounds for both Junction City Elementary and New Lexington Elementary will be expanded. In order to maintain

proper social distancing and have the proper amount of equipment to serve our students, monies will be spent to increase the surface area of playgrounds and playground equipment for student use.

- During the 2021-2022 school year, the District will purchase the Workforce Development Building. This building will serve as a place for our students and members of our community to earn credentials that will increase chances of employability. The building will also be used to house various programs throughout the school day in which students can participate. The Workforce Development Building will have supports for behavioral and mental health and resources for our community members and our students. Additionally, afterschool programming will be held here. Students will be able to receive intervention and academic support, homework help, participate in clubs, and have enrichment opportunities after-school hours.
- During the 2022-2023 school year, a Middle School learning lab will be created by renovating the garage lab setting. The current setting does not allow for proper social distancing. The renovation will allow for expanded learning space. Both agricultural and science classes will have the opportunity to utilize the space, thus leading to a greater ability to practice social-distancing.
- During the 2023-2024 school year, a new Agriculture Learning Lab will be built for the High School. A garage lab classroom setting similar to the space that currently exists at the Middle School will be built in order to allow for natural ventilation and fresh air openings.
- Comprehensive summer school will be offered beginning in June 2022 with transportation and meal delivery options.
- A tutor was hired to help close the learning gaps created from the pandemic. The tutor will work remotely to help students with skills and concepts in core subject areas who have to learn from home.
- A Health & Wellness Coordinator was retained to serve as our point of contact for all things related to the pandemic. Duties include staying in contact with the Perry County Health Department, keeping data and records for all COVID cases, communication with staff, parents, students, and administrators, and acting as a liaison between Allwell Behavioral Health and the district for mental health services for our students.
- Two additional nurse assistants were hired during the 2021-2022 school year.
- An e-Academy monitor was retained during the 2021-2022 school year and will continue through the 2022-2023 school year. The focus of this position is to help students close the learning gap due to the pandemic. Students placed in

e-Academy will be working toward credit recovery in order to meet graduation requirements.

- A Remote Learning Coordinator was retained in order to make sure program offerings and the online dashboard are maintained and used appropriately.
- An Assistant Technology Director was hired in order to assist the Technology Director. Duties include assisting the technology director with maintaining equipment and software, help remote learning students obtain equipment, set up new technology, and to aid with the dispersal, collection, and sanitation of equipment.
- A part-time Community Liaison was hired to market and promote opportunities for remote learning, outdoor learning labs, e-Academy, in-school opportunities, district information, and aid the Health and Wellness Coordinator with communication of recommended CDC guidelines and protocols.
- A Curriculum Administrator was hired to make curricular decisions to ensure learning loss is considered and a plan is made to make sure learning gaps close.

## **Summary or Use of Funds**

Facility Repairs & Improvement: \$3,162,300.00

Learning Loss: \$1,397,847.13

Other Educational Services: \$80,000.00

Mental Health & Wellness Services: \$358,703.00