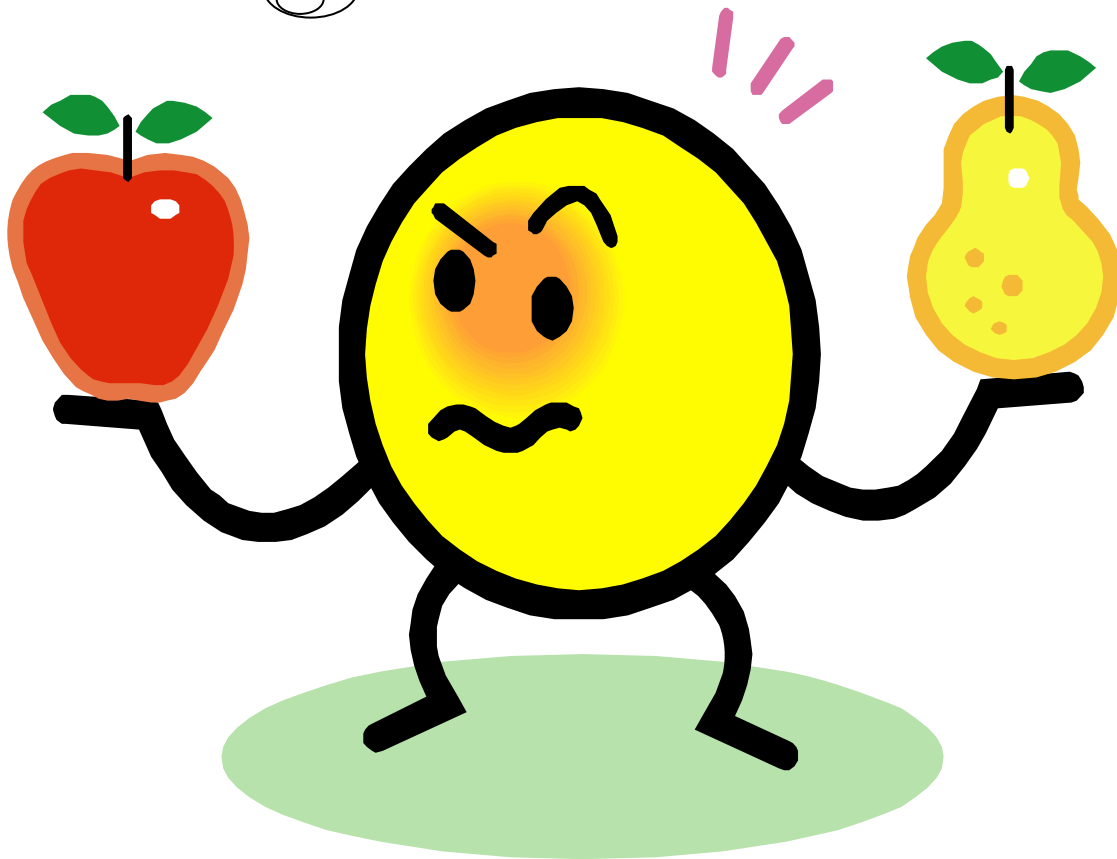


Compare

How are they
alike?

How are they
different?



Draw



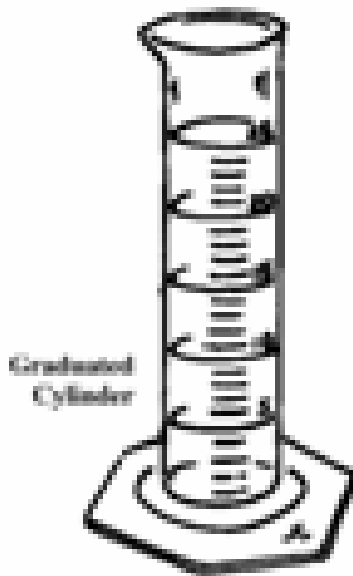
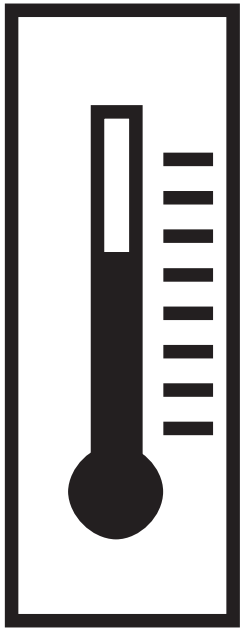
Conclusions

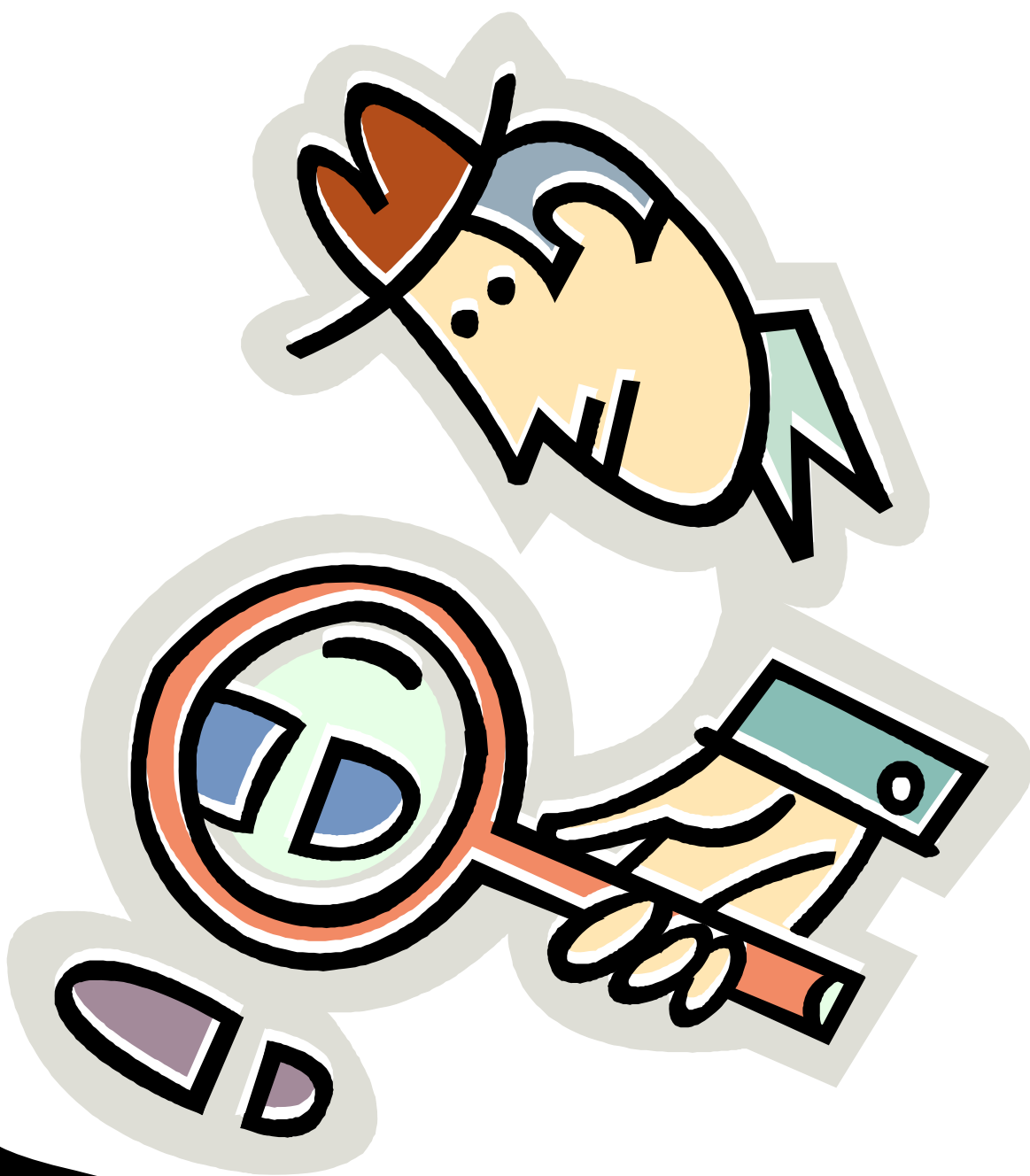
Why do you think
that?

Hypothesize



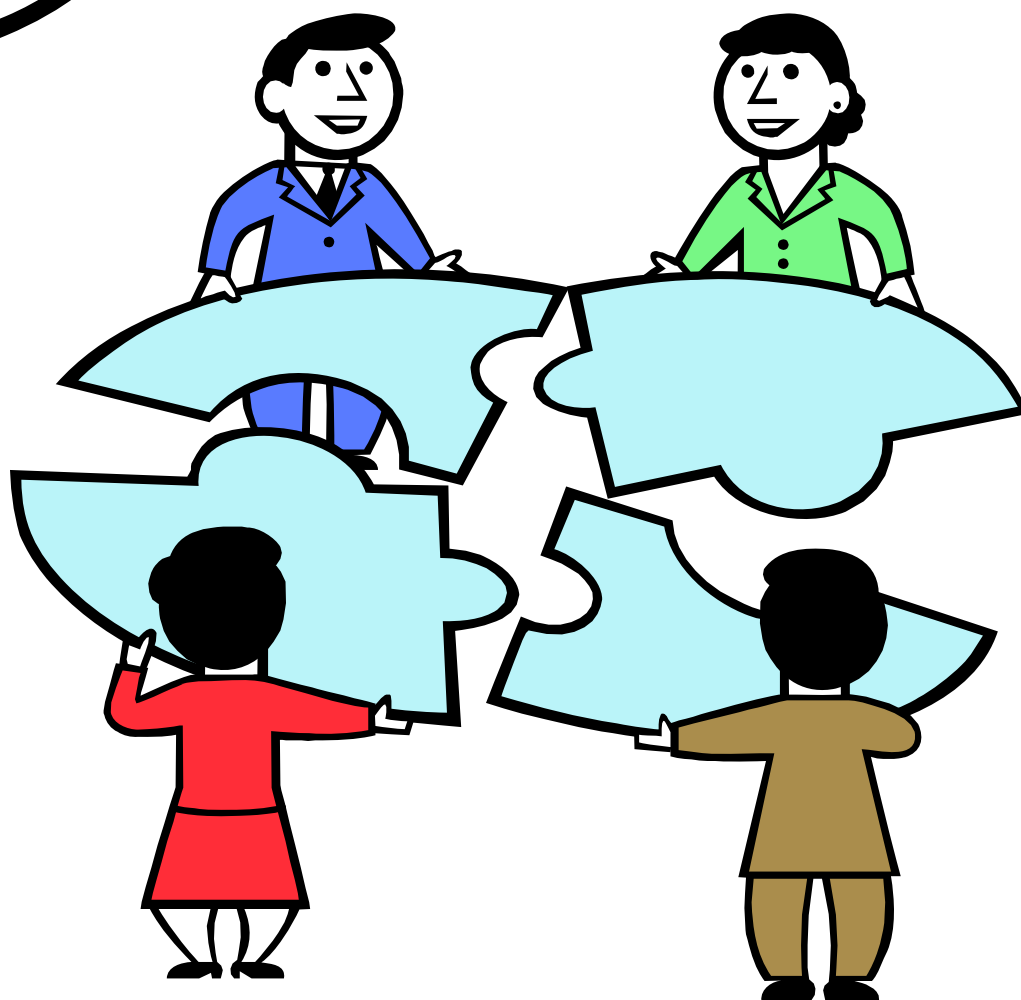
Measure



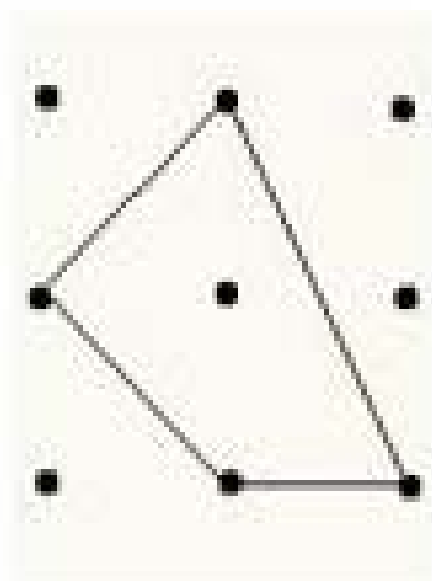
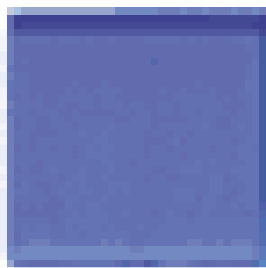
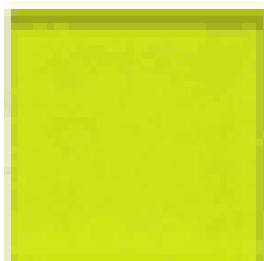


Infer

Problem Solving



Experiment



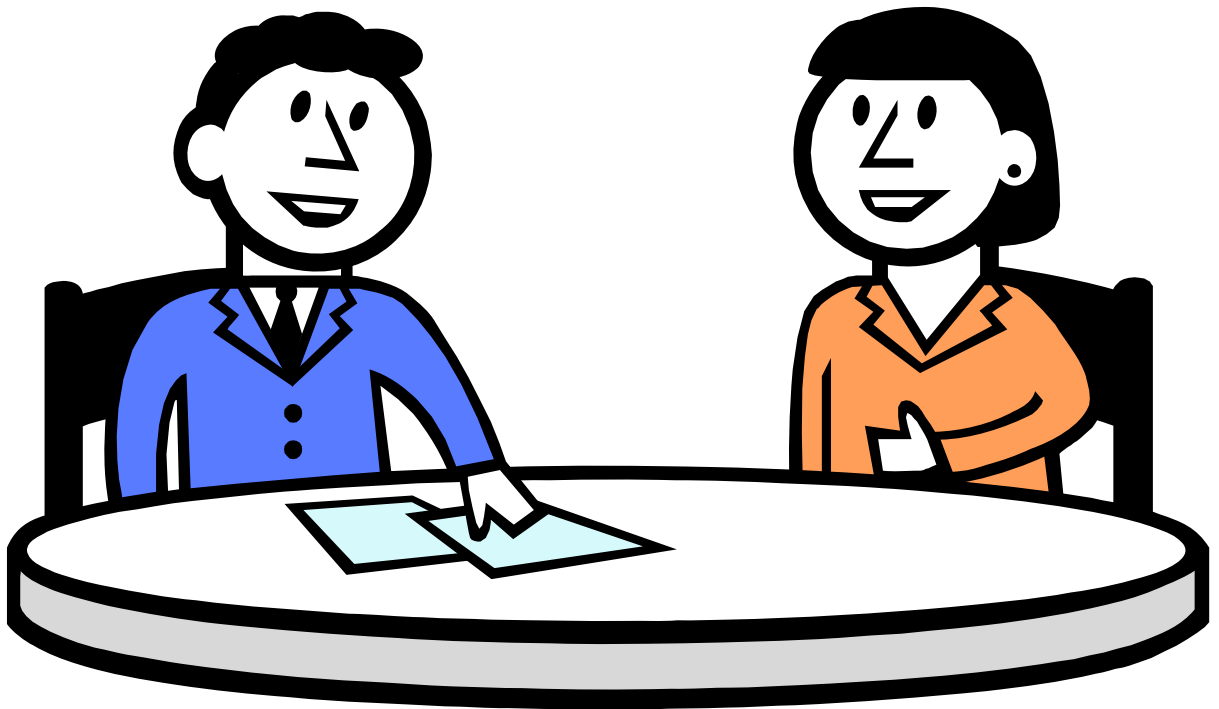
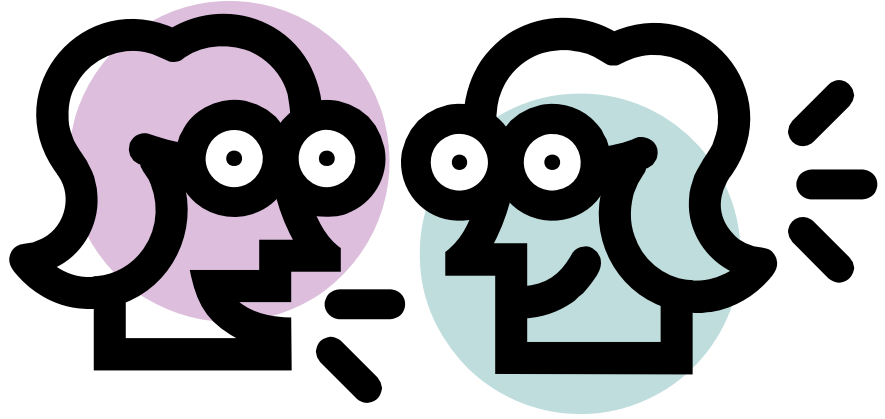
I think ...

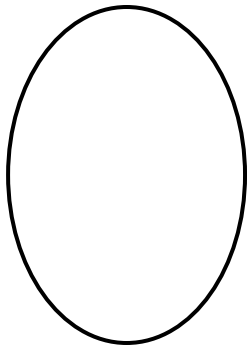
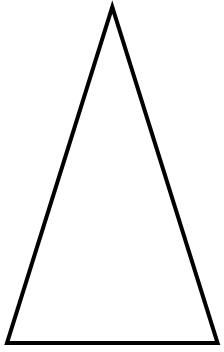
because...



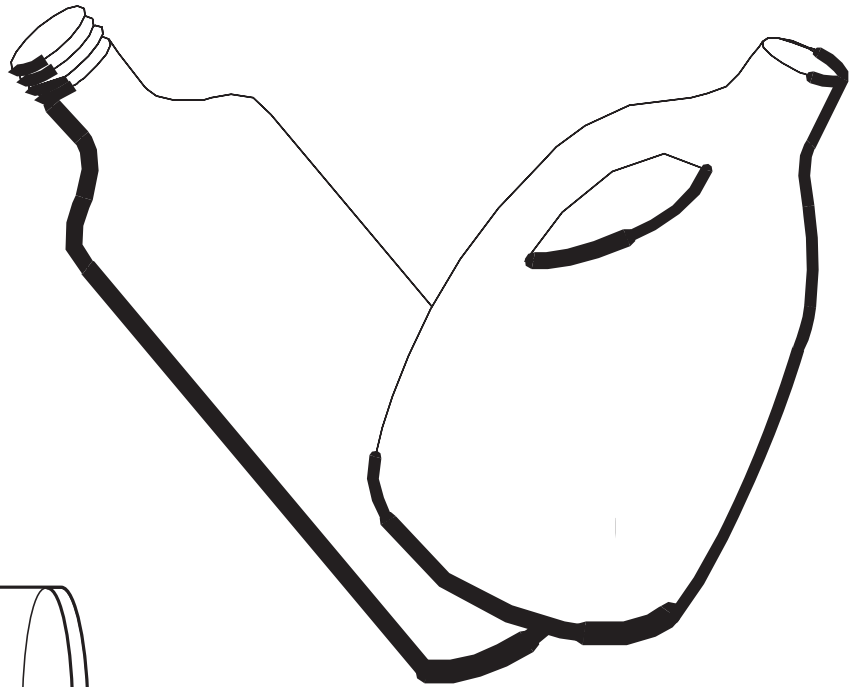
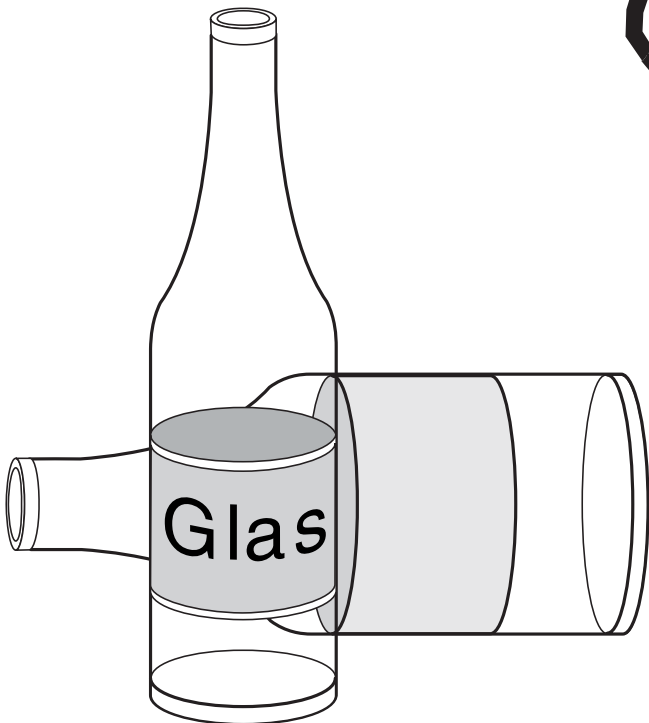
Predict

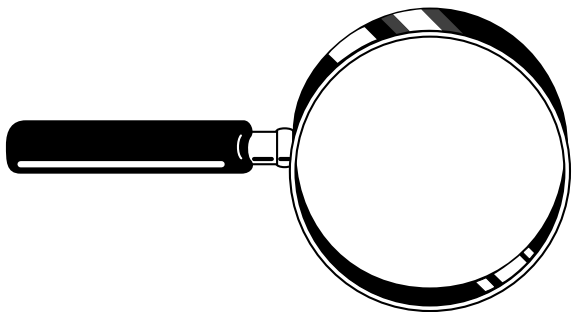
Communicate



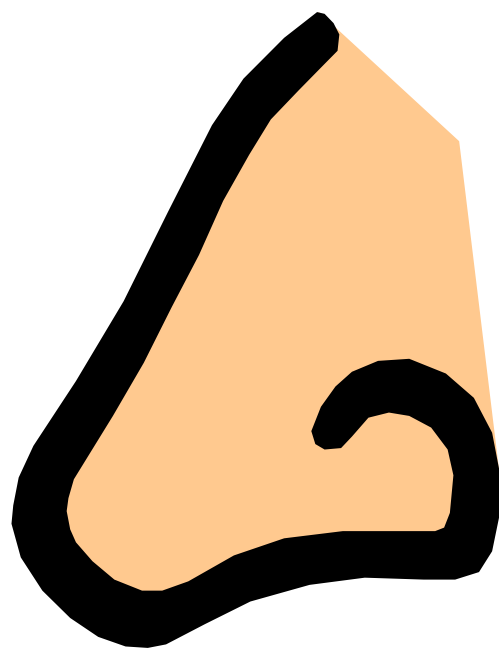


classify

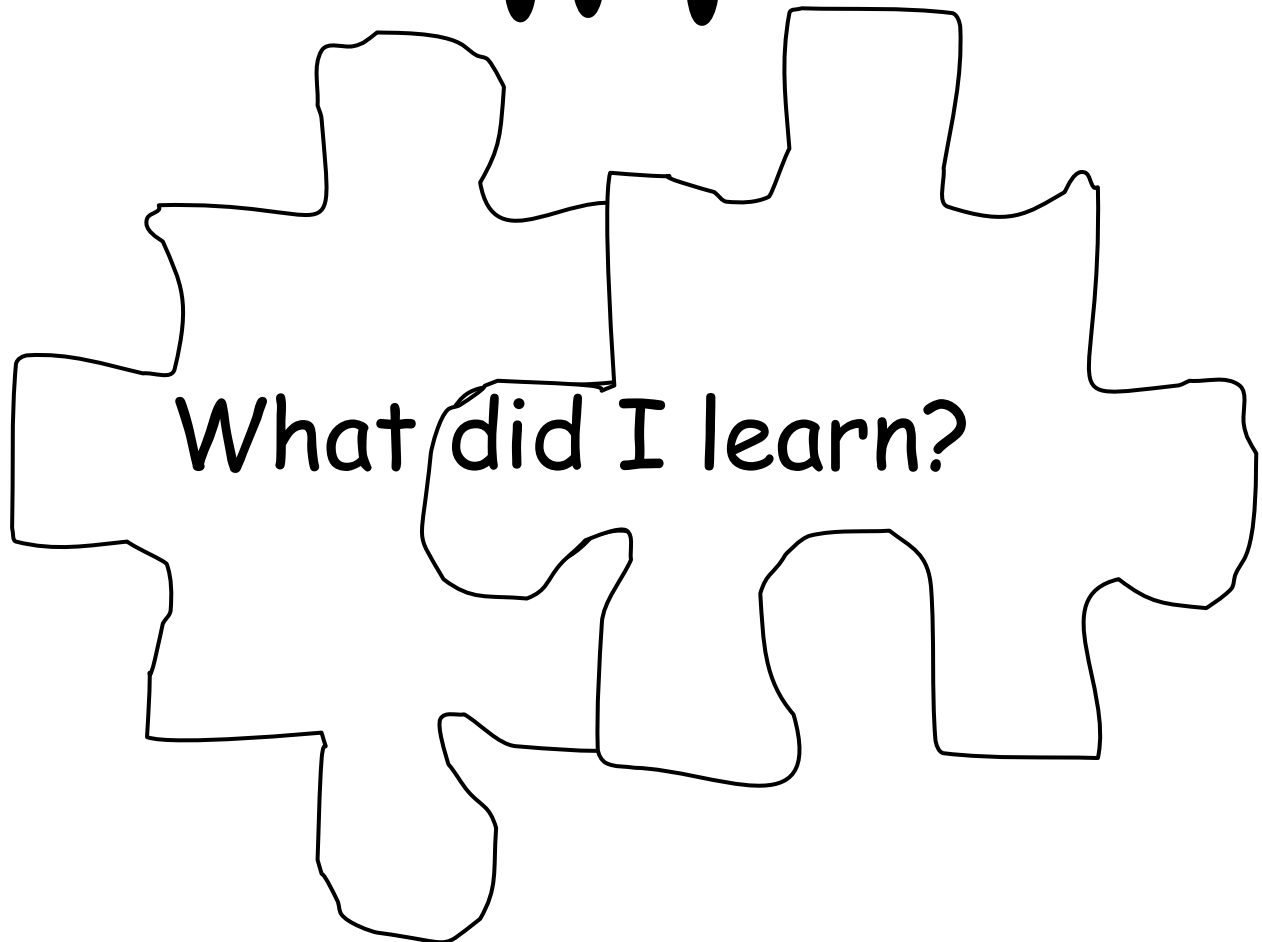




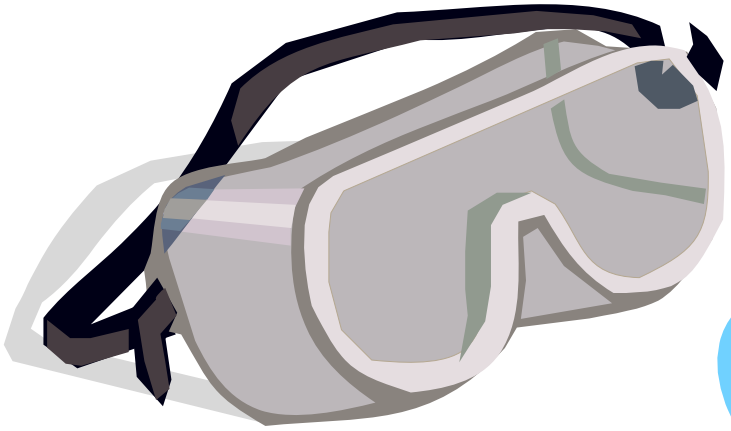
observe



Connect



What did I learn?

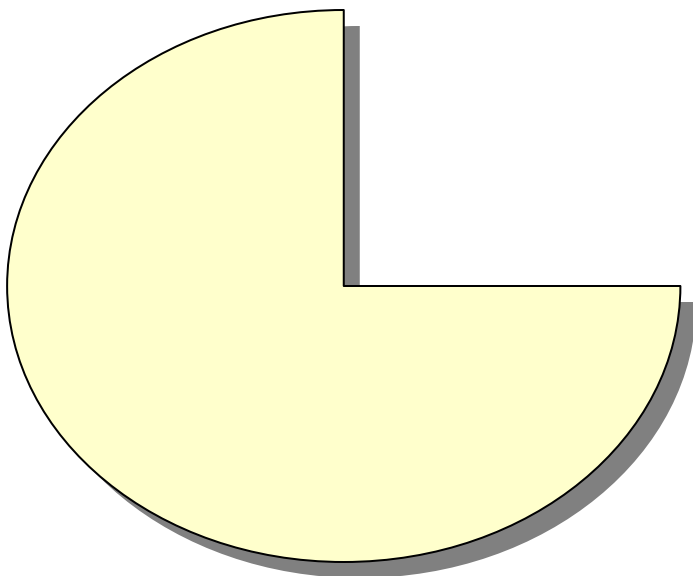
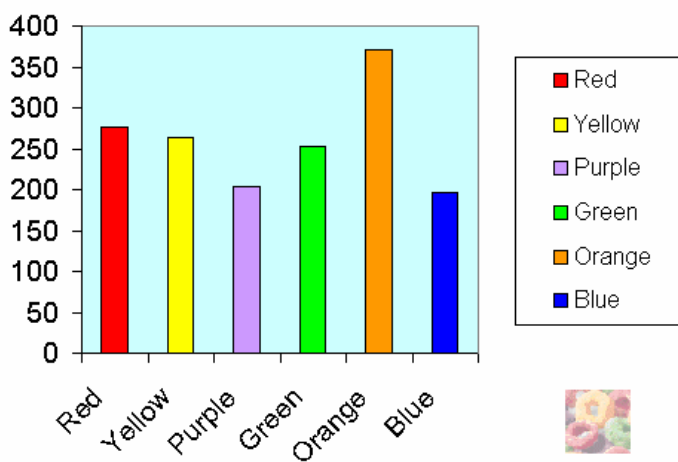


Safety

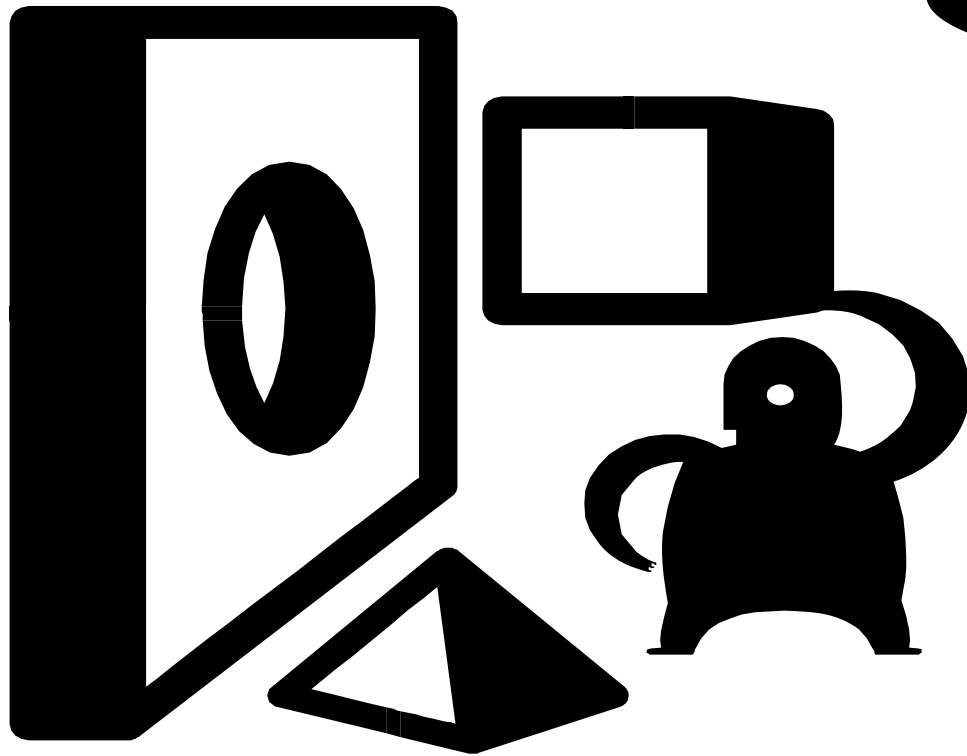
Interpret Data



Froot Loops to the Max



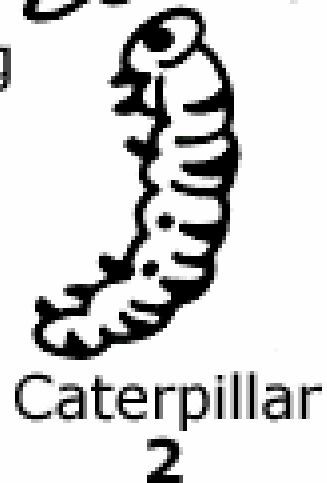
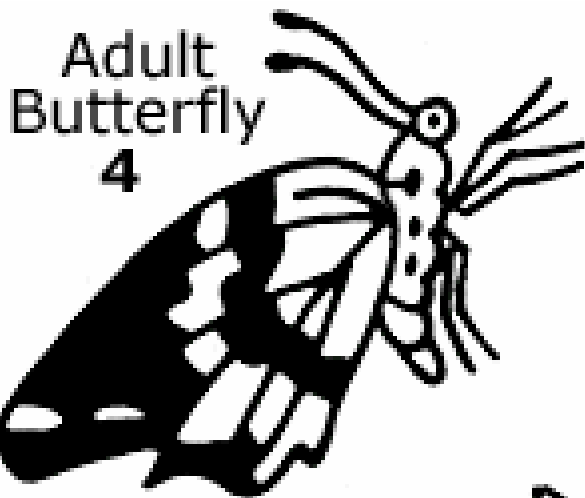
Reasoning



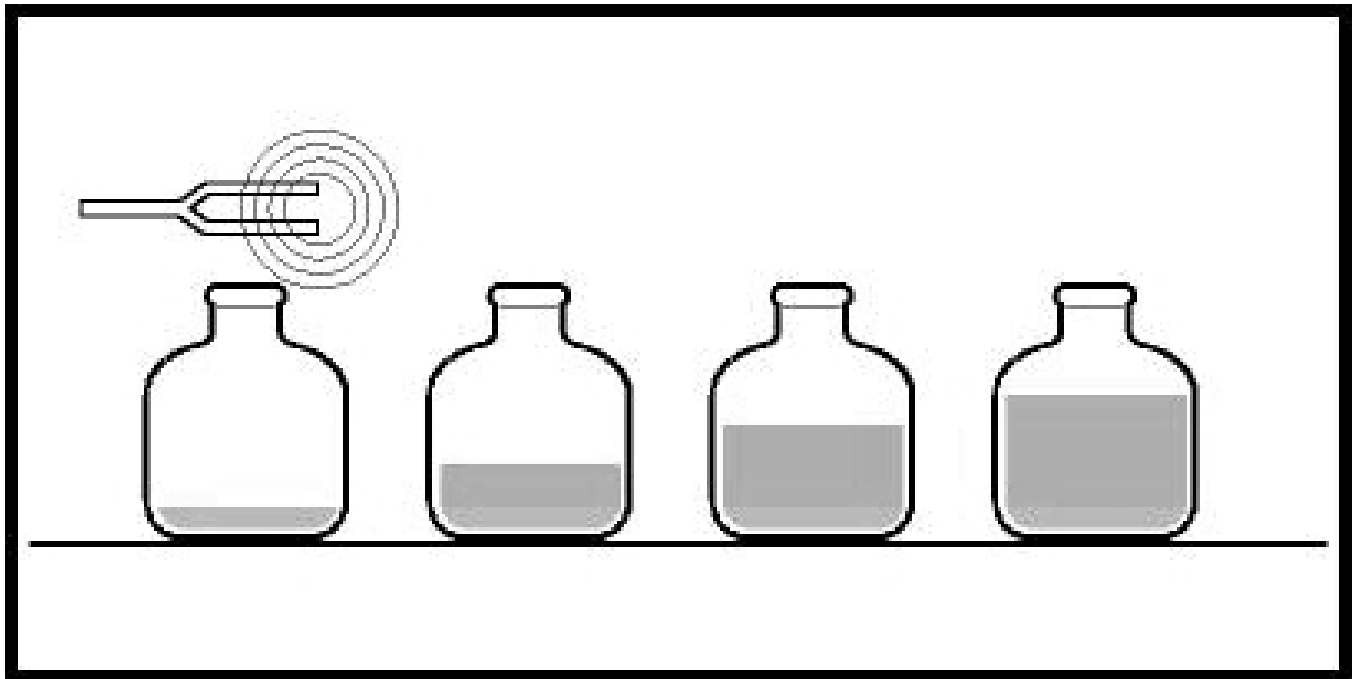
and
Proof

Representation

$$\text{\$} + = \frac{1}{2}$$



Control Variables



Design

